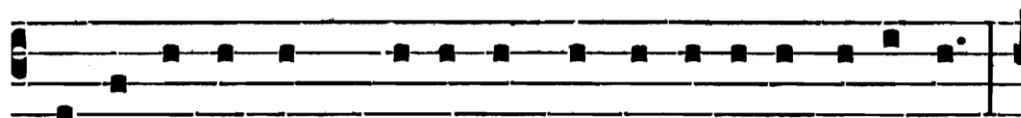


# SAINTE TRINITÉ

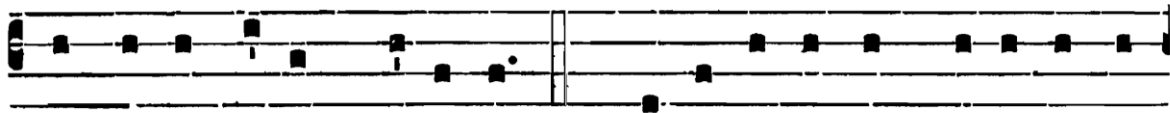
## *Graduel psalmodié :*

Grad.  
v

**B**



E-ne-díctus es, \* Dómi-ne, qui intu-é-ris abýssos,



et sé-des super Ché-ru-bim. ∇. Be-ne-díctus es, Dómi-ne, in



firmaménto caé-li, et laudá-bi-lis in saécu-la.

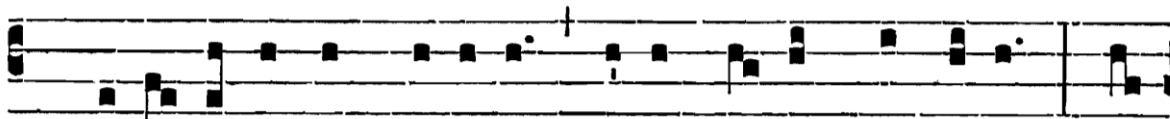
## *Alleluia psalmodié :*

VIII

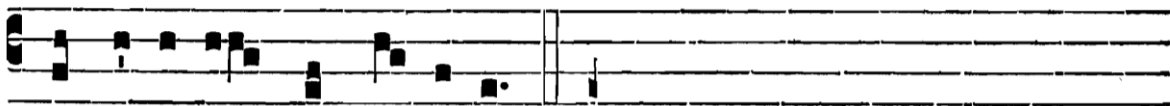
**A**



L-le-lú-ia. \* ij.



∇. Be-ne-díctus es, Dómi-ne, Dé-us pátrum nostró-rum, et



laudá-bi-lis in saécu-la. Allelúia.