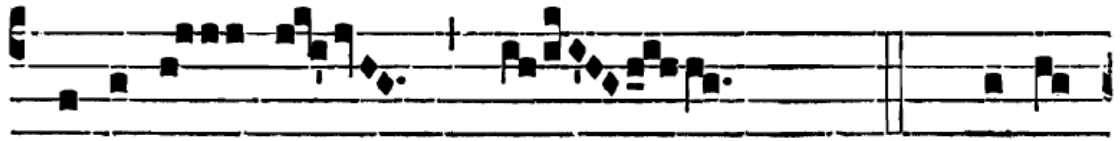


ROGATIONS

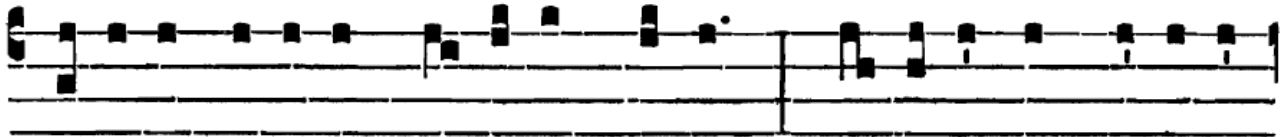
Alleluia psalmodié :

VIII

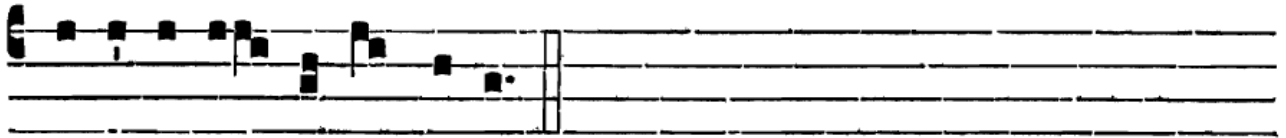


A

L-le-lú- ia. * (*qu'on ne répète pas.*) Ψ . Confi-



témi-ni Dómi-no, quó-ni-am bó-nus : quó-ni-am in saécu-lum



mi-se-ri-cór- di- a é-jus. *On ne répète pas Allelúia.*